



The **MagniView** endoscopes.

A step forward in characterisation.

The PENTAX Medical MagniView endoscopes join the outstanding HD+ image series with an optical zoom function. In combination with i-scan, the MagniView endoscopes provides a new standard for daily practice, supporting enhanced characterisation in a wide range of procedures, with its 136 times magnified image.

Advanced ergonomics and graduated flexibility of the insertion tube, increases both patient and physician comfort.

MagniView: HD+ and Optical Zoom technology combined.

HD+, Optical Zoom technology and i-scan - the perfect combination for improved characterisation.



Powerful magnification

- The optical zoom technology magnifies the image 136 times, allowing for detailed surface structure observation and supporting enhanced characterisation.



Excellent imaging capabilities

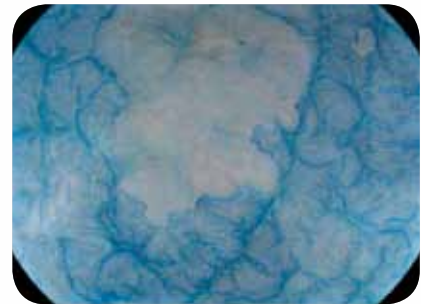
- The combination of i-scan, HD+ and magnification in a standard endoscope provides state-of-the-art technology in detection and characterisation in daily clinical routine.

Fully functional endoscope

- Designed to have the same working channel and equivalent outer diameter as a standard diagnostic endoscope, with optical magnification capabilities. Easy to position, easy control of magnification and advanced ergonomic design.



Magnified endoscopic image



Magnified endoscopic image

MagniView VIDEO ENDOSCOPES

| | Product | Insertion tube [ø mm] | Distal end [ø mm] | Instrument channel [ø mm] | Working length [mm] | Field of view [mm] | Tip deflection up/down [°] | Tip deflection right/left [°] | Remarks |
|---------------------|------------|--------------------------|----------------------|------------------------------|------------------------|-----------------------|----------------------------------|-------------------------------------|---------------------------------------|
| Gastroscope | EG-2990Zi | 9.8 | 10.6 | 2.8 | 1,050 | 140 | 210/120 | 120/120 | HD+, MagniView, Water Jet System |
| Colonoscopes | EC-3890LZi | 13.2 | 13.0 | 3.8 | 1,700 | 140 | 180/180 | 160/160 | HD+, MagniView, GDF, Water Jet System |
| | EC-3890FZi | 13.2 | 13.0 | 3.8 | 1,500 | 140 | 180/180 | 160/160 | HD+, MagniView, GDF, Water Jet System |
| | EC-3890MZi | 13.2 | 13.0 | 3.8 | 1,300 | 140 | 180/180 | 160/160 | HD+, MagniView, GDF, Water Jet System |

*Distal Rubber Hood: OE-A58 compatible with EG-2990Zi, OE-A59 compatible with EC-3890Zi series

PENTAX doesn't take any liability for the accuracy of the content as laid out in this brochure. In the interest of technical progress specifications are subject to change without notice. Details concerning the compatibility with other medical devices are to be found within the corresponding Instructions for Use.